

L101P Product Specification

2-port GPON OLT



Introduction

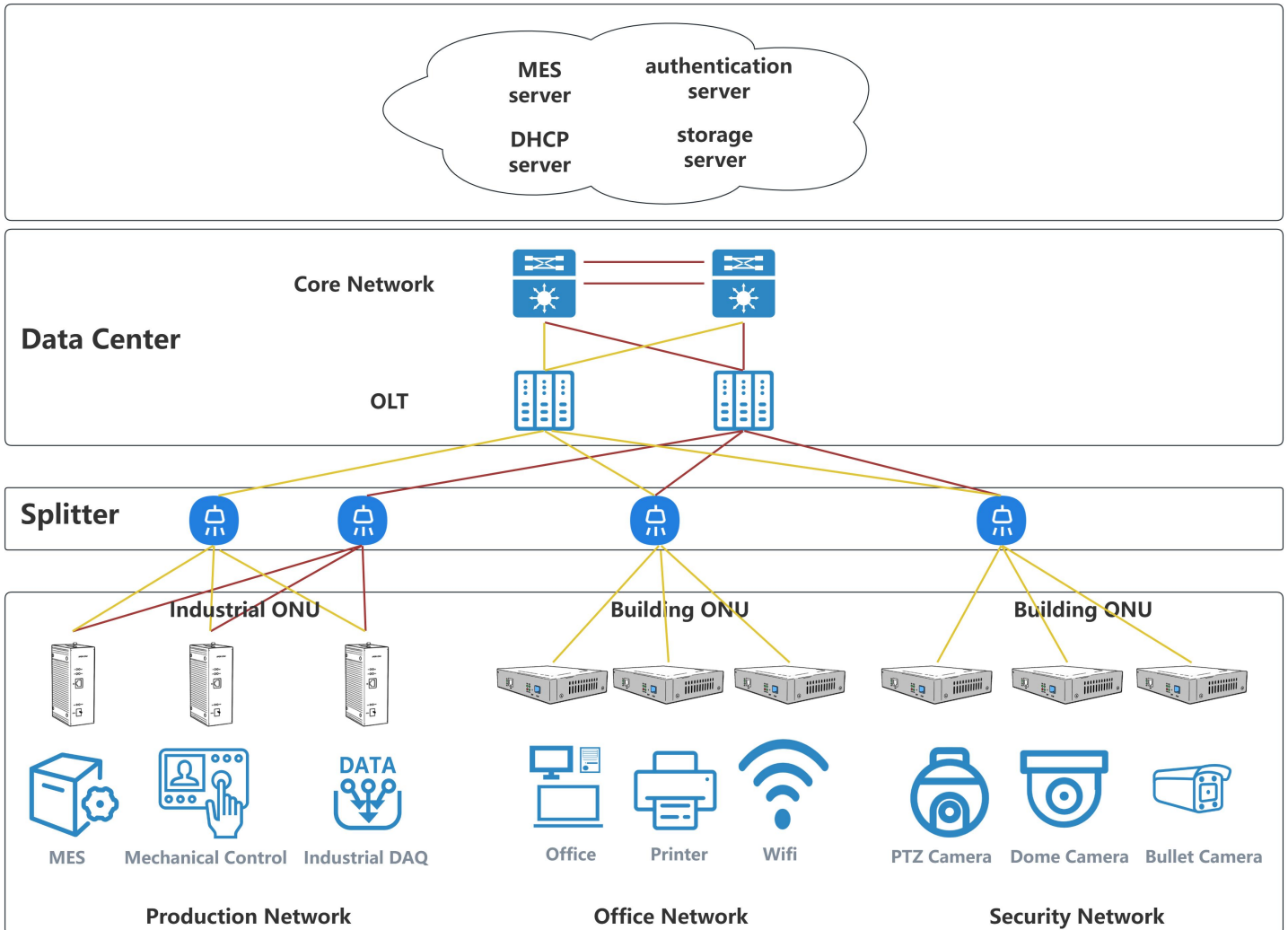
The GPON OLT L102P fully complies with the international standards of ITU-T G.984.x and FSAN specifications.

The device is equipped with 2 fixed Gigabit Ethernet uplink ports, 1 10G/XGS-PON uplink port, and 2 GPON port.

It adopts a fanless design for silent operation, wide temperature resistance, and high reliability in various deployment scenarios.

Each GPON port supports a maximum splitting ratio of **1:128**, and the system can accommodate up to 128 ONU terminals in a single GPON system.

Application Scenarios



Technical Specifications

Item		L101P
Appearance	Chassis	1U
Uplink Port	Quantity	3
	RJ45 (GE)	2
	SFP (GE)/SFP+ (10GE)	1
GPON PON Port Specifications	Quantity	2
	Physical interface	SFP slot
	Interface type	GPON: ITU-TG.984.2 Class B+/Class C+
	GPON PON Port Rate	Upstream 1.244Gbps, Downstream 2.488Gbps
	Wavelength	TX 1490nm, RX 1310nm
	Maximum Splitting Ratio	1:128
	Transmission Distance	20KM
Management Port		1×USB-COM (Type-C) Port
Management Mode		WEB / Telnet / CLI / SNMP
Power Supply	AC	Operating Voltage Range: 100~240V, Rated Voltage: 110V/220V
	DC Power Adapter	DC 12V/2A
Lightning Protection Rating	Power	4KV
	Interface	1KV

Feature Overview

Management Functions

- Telnet, CLI, WEB, SNMP
- Port status monitoring and configuration management
- Online ONT configuration and management
- User management
- Alarm management

Switching Functions

- Access/Trunk/Hybrid L2 access mode
- Support 64K MAC address
- Support 4094 VLANs
- VLAN filter function,VLAN transform
- L2 port mirror
- MAC address learning/aging

Multicast

- IGMP snooping
- IGMP V1/V2/V3
- Multicast VLAN translation

GPON Functions

- Compliant with ITU-T G.984.x standards
- Maximum transmission distance up to 20KM
- Supports data encryption, multicast, port VLAN, user isolation, etc.
- Supports automatic ONT discovery, link detection and remote software upgrade
- Supports VLAN division and user isolation to prevent broadcast storms
- Supports power-off alarm function for convenient link fault detection
- Supports anti-broadcast storm function

Physical & Environmental Specifications

- Weight Net weight (single power supply): 1Kg
- Operating Temperature -20 ° C ~ +60 ° C
- Storage Temperature -40 ° C ~ +70 ° C
- Relative Humidity 5% ~ 95% (non-condensing)

Order Information

Model	Product Description	Power supply	Optional Spare Parts
L102P	2*GPON, 2*RJ45+1*SFP/SFP+	1*AC (Default) 1*AC+1*DC 12V 1*DC 12V	10G SFP+ PON Module